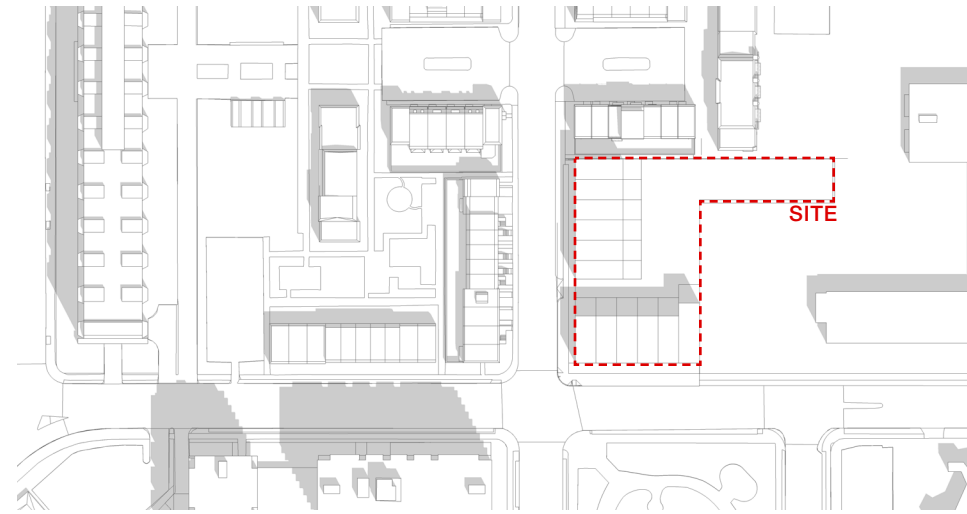




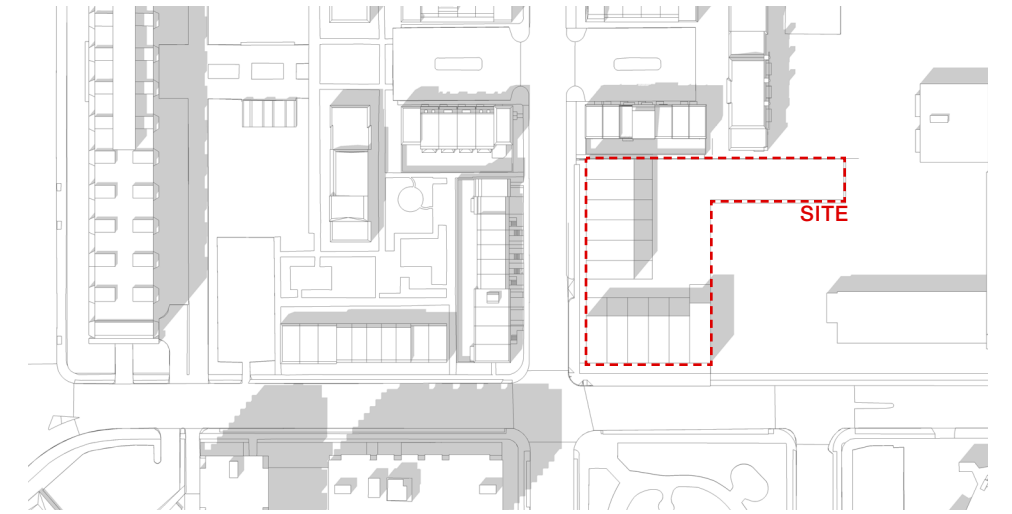


MARCH 21 & SEPTEMBER 21

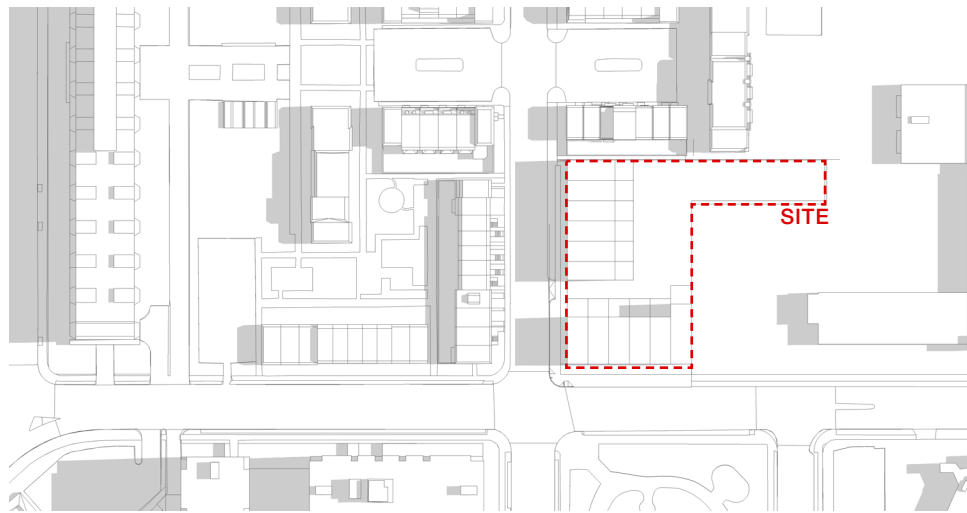
9 AM



12 PM

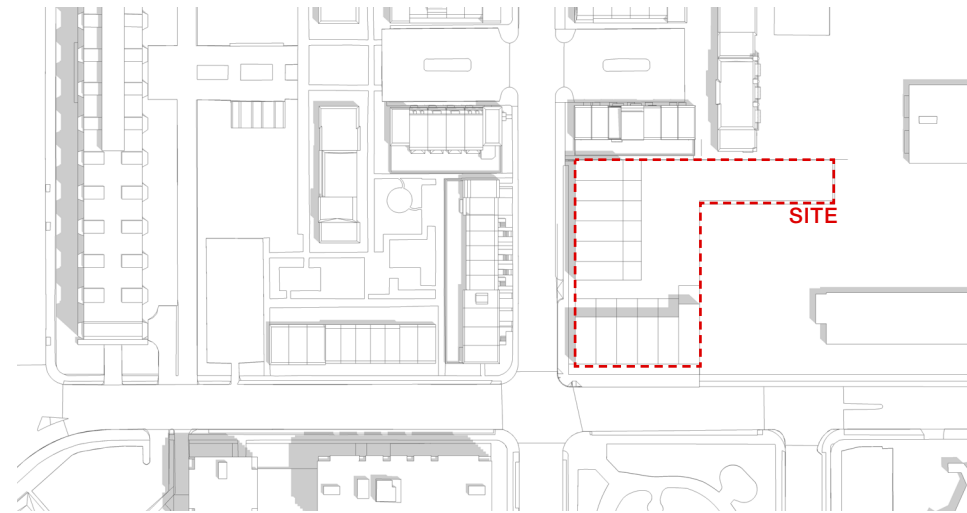


3 PM

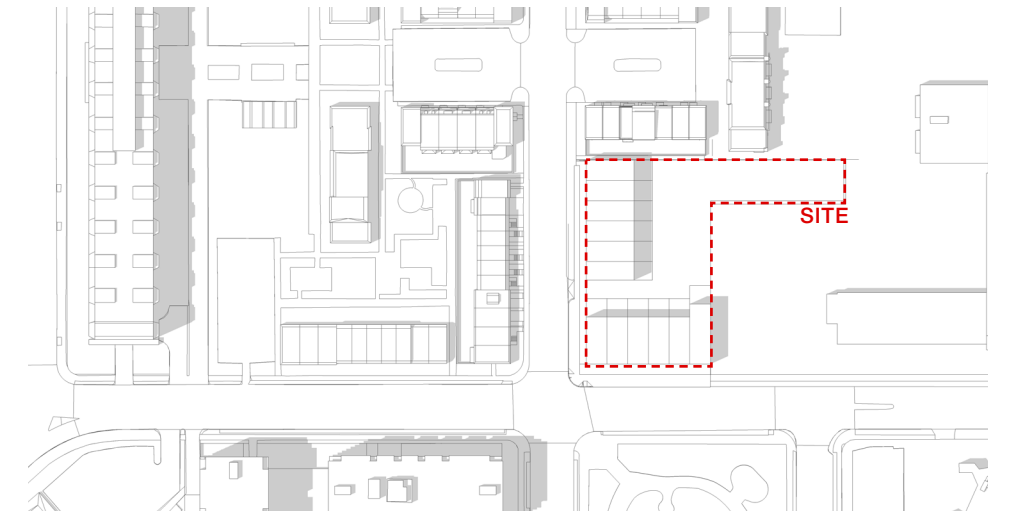


JUNE 21

9 AM



12 PM



3 PM

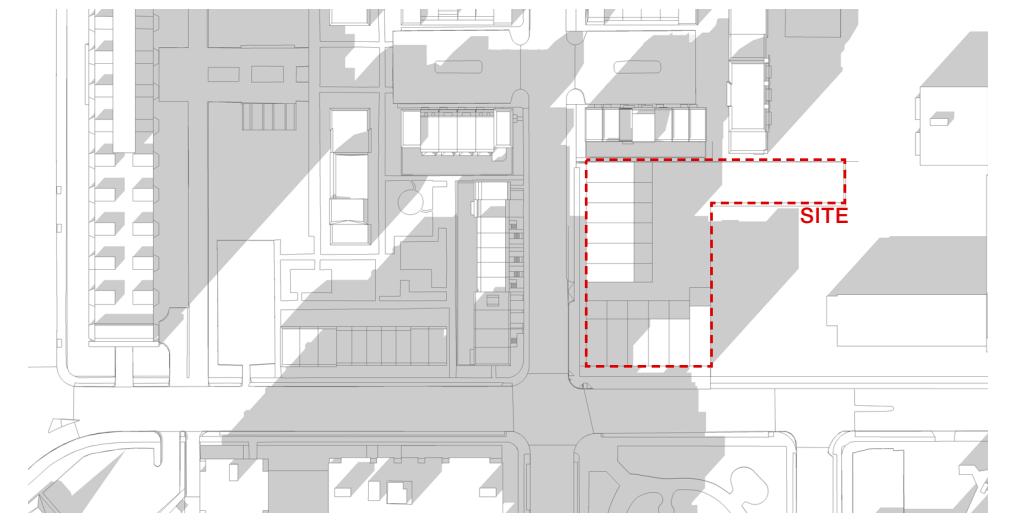


DECEMBER 21

9 AM

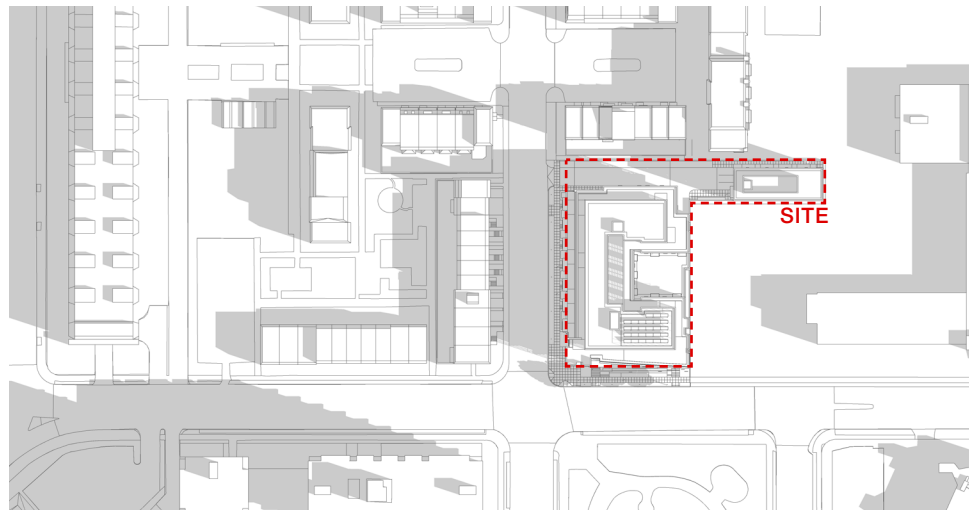


12 PM



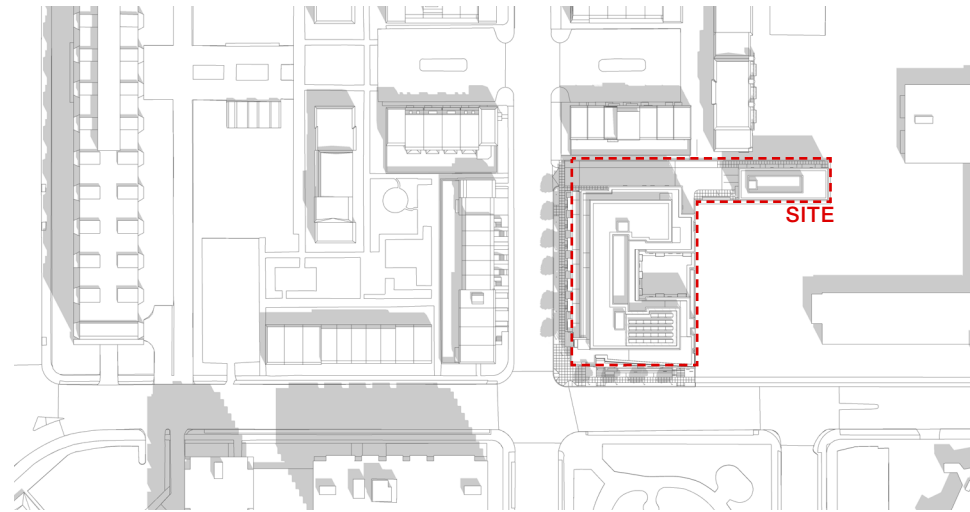
3 PM



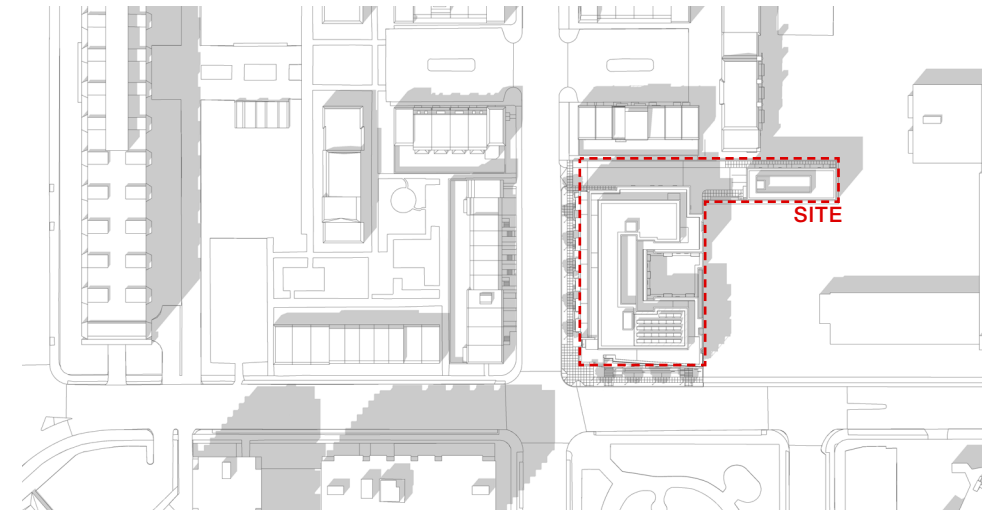


MARCH 21 & SEPTEMBER 21

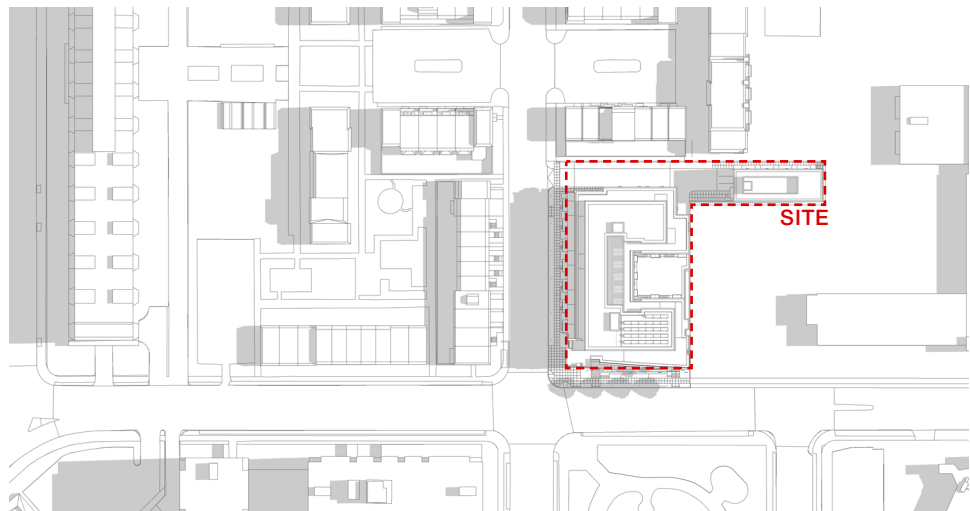
9 AM



12 PM

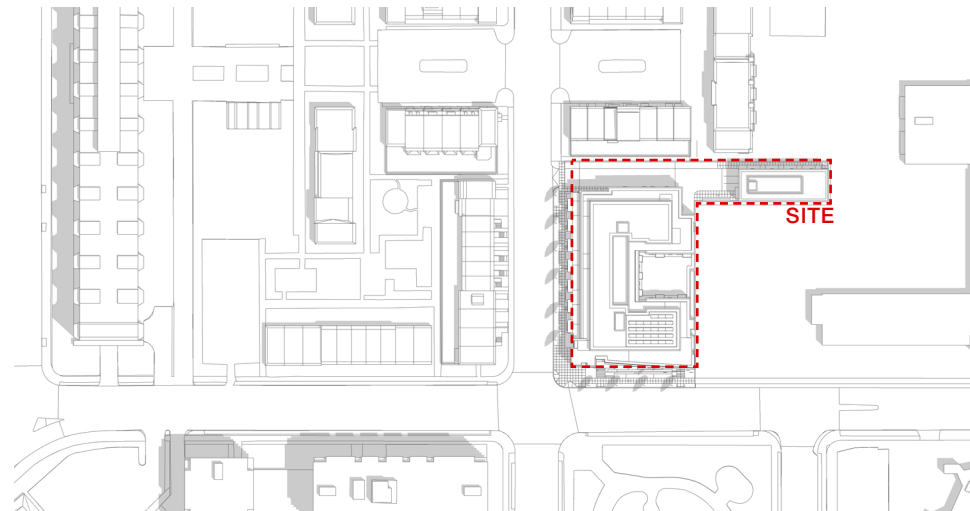


3 PM

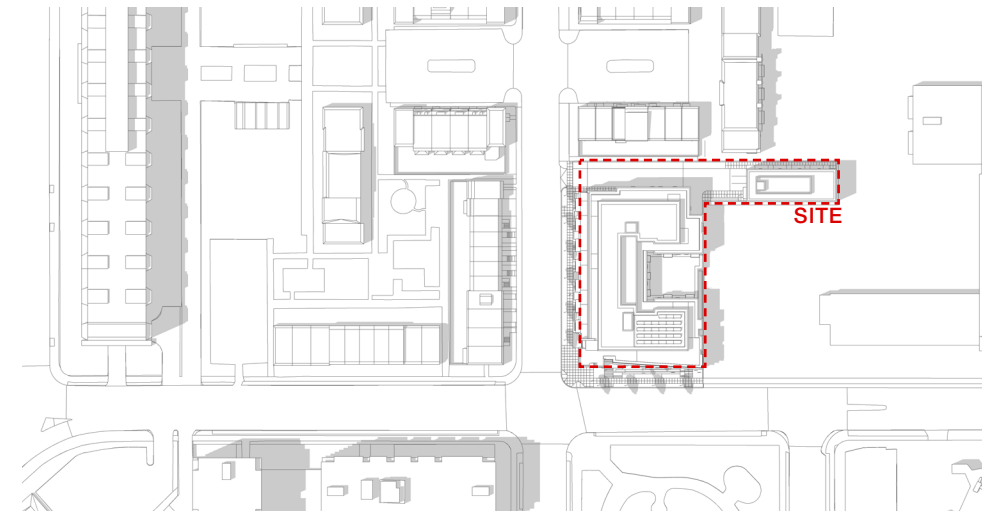


JUNE 21

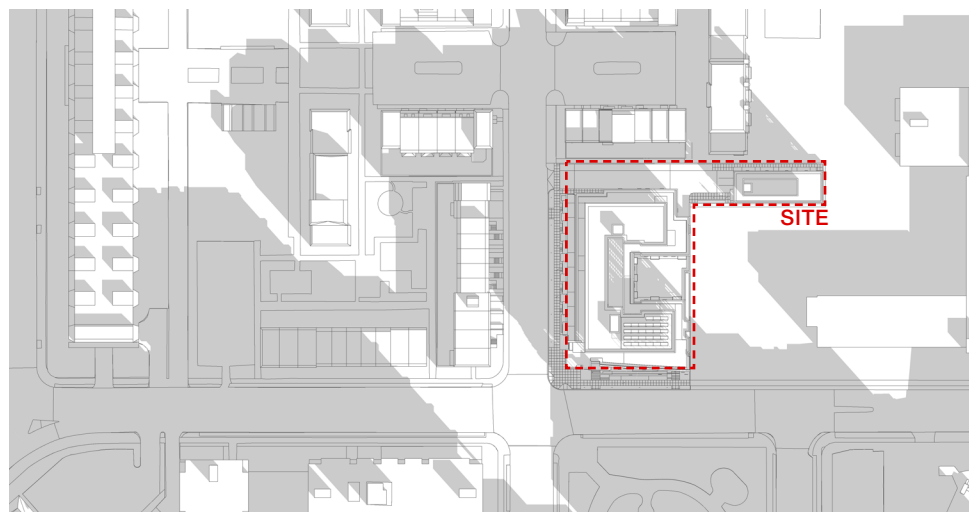
9 AM



12 PM

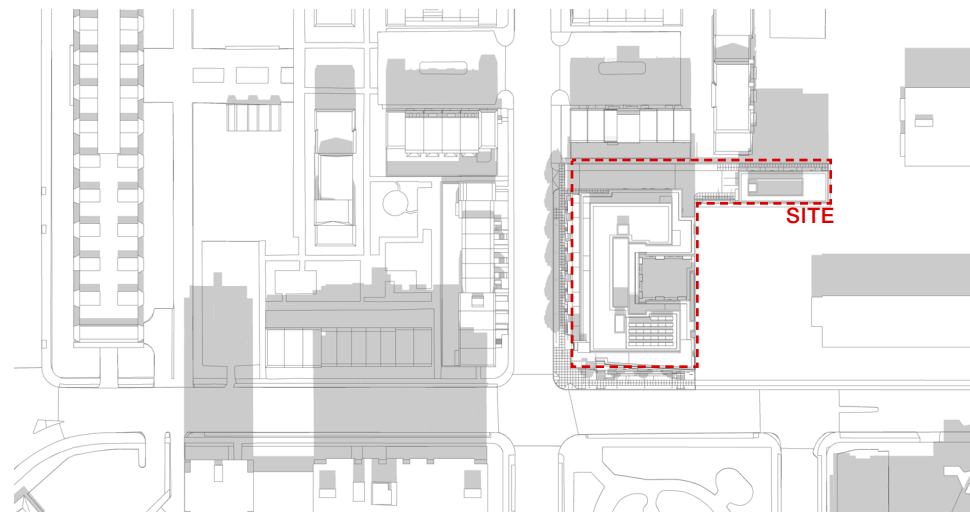


3 PM

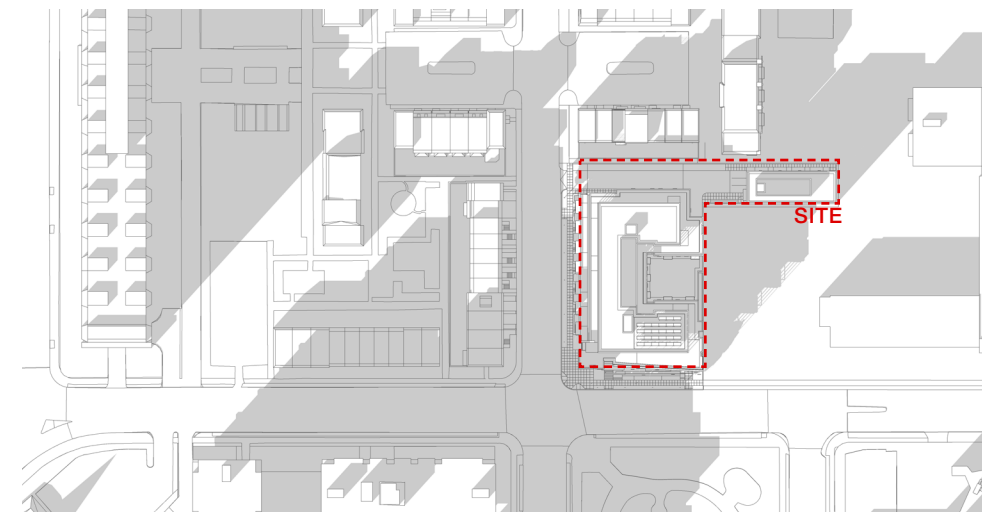


DECEMBER 21

9 AM



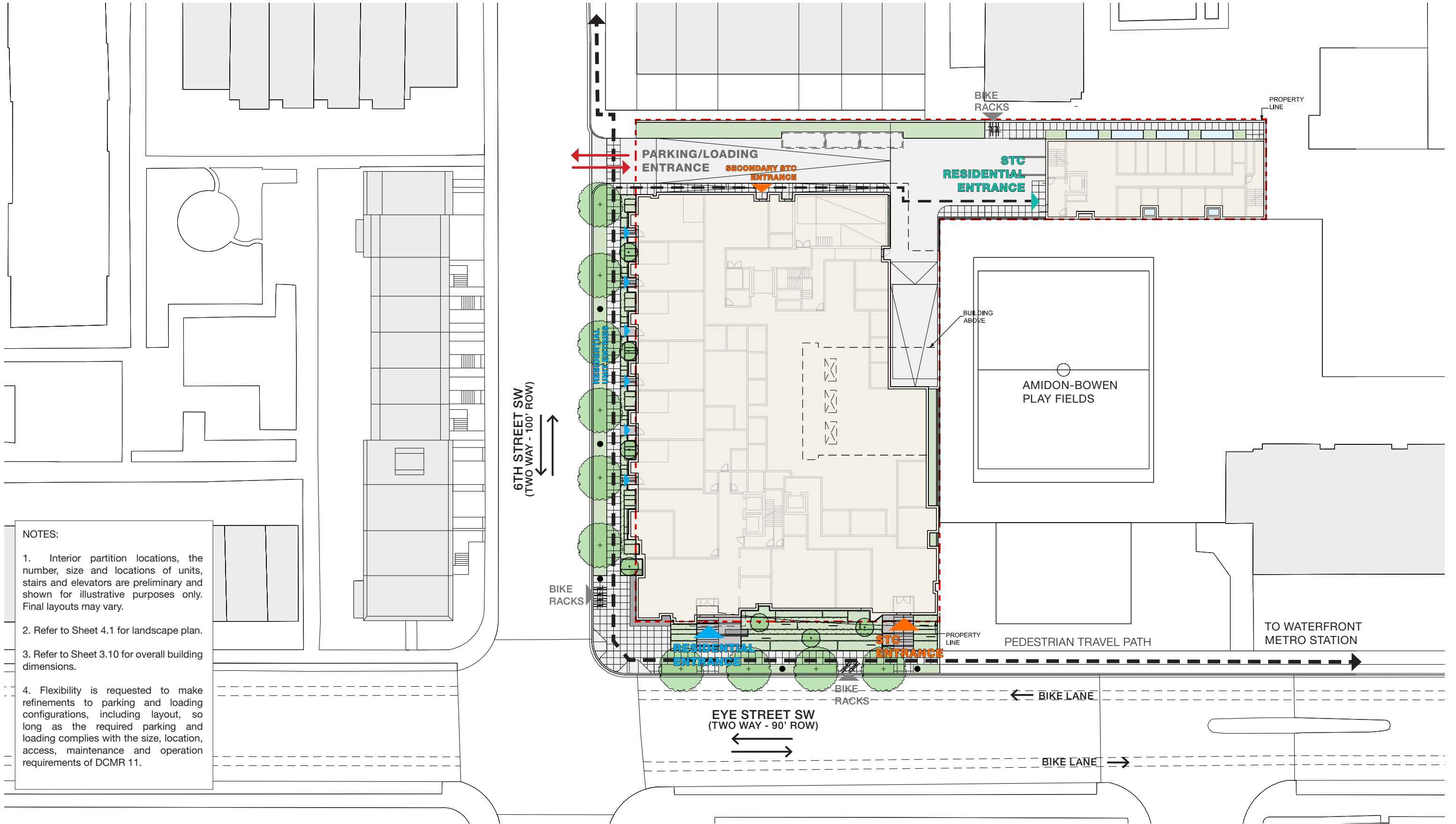
12 PM



3 PM







**NOTES:**

1. Interior partition locations, the number, size and locations of units, stairs and elevators are preliminary and shown for illustrative purposes only. Final layouts may vary.
2. Refer to Sheet 4.1 for landscape plan.
3. Refer to Sheet 3.10 for overall building dimensions.
4. Flexibility is requested to make refinements to parking and loading configurations, including layout, so long as the required parking and loading complies with the size, location, access, maintenance and operation requirements of DCMR 11.

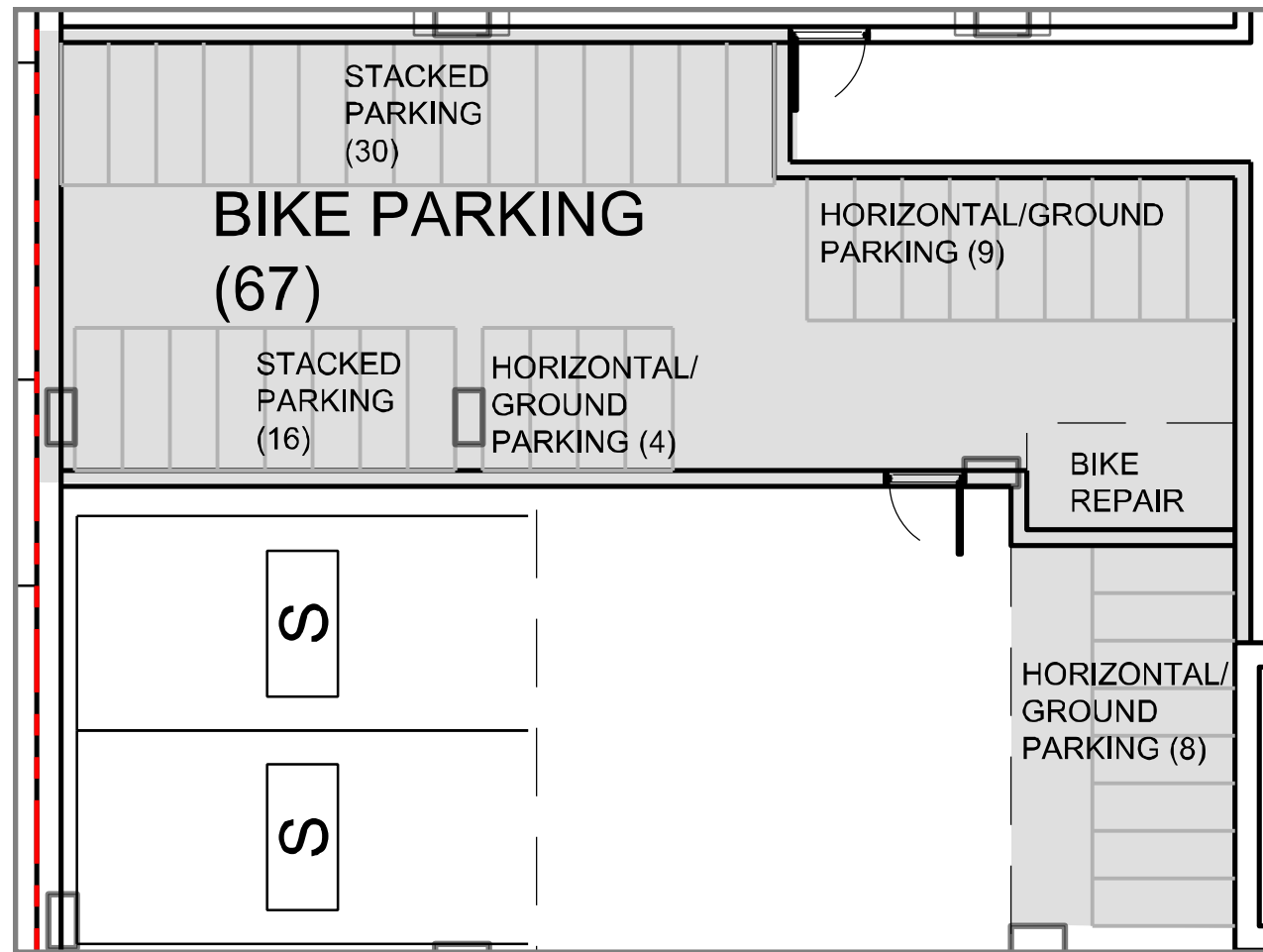












**LONG TERM BIKE PARKING**



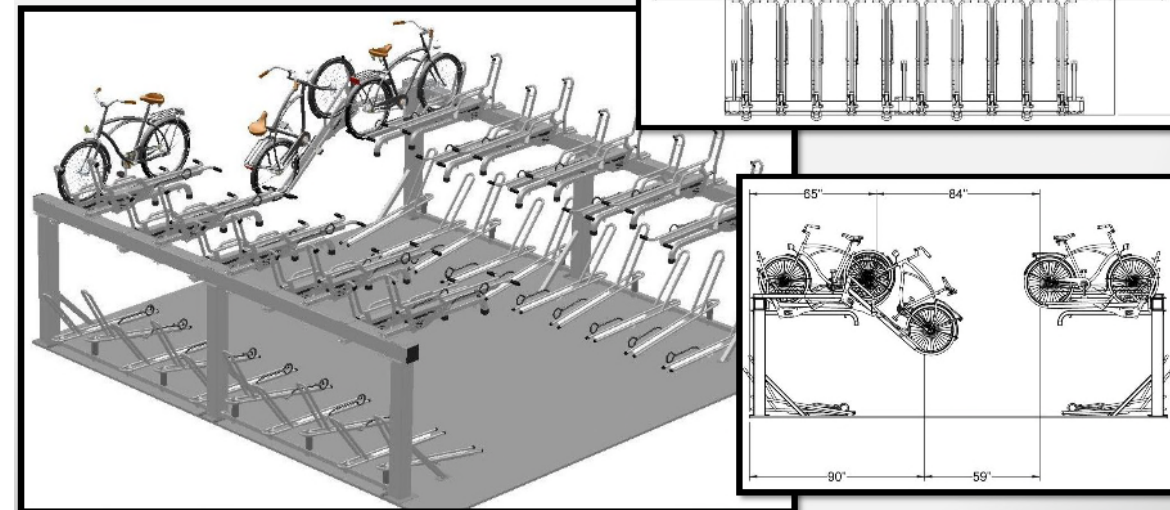
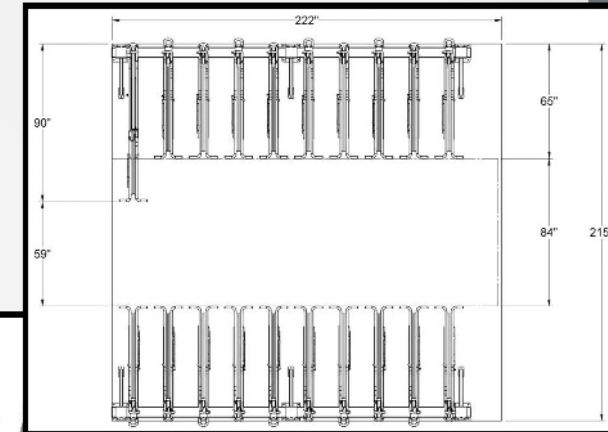
**BIKE PARKING**

Long Term	Required	Provided
Residential	35	
Non Profit Office	5	
Arts, Design, & Creation	2	
<b>Total</b>	<b>42</b>	<b>67</b>
<b>Short Term (Provided at grade)</b>		
Residential	6	
Non Profit Office	0	
Arts, Design, & Creation	2	
<b>Total</b>	<b>8</b>	<b>16</b>
<b>TOTAL</b>	<b>50</b>	<b>83</b>

**Two-Tier: Articulating Top Level**

Recommended Installation (opposite Walls)

- Parks 40 bikes in 331.5 sq. ft.
- 84" aisle way when all trays are up
- 59" aisle way when one opposite tray is down
- 108" ceiling height min.
- 18", 20" or 24" spacing in-between bicycles



**NOTES:**

1. Interior partition locations, the number, size and locations of units, stairs and elevators are preliminary and shown for illustrative purposes only. Final layouts may vary.
2. Flexibility is requested to make refinements to parking and loading configurations, including layout, so long as the required parking and loading complies with the size, location, access, maintenance and operation requirements of DCMR 11.
3. A minimum of 50% of required long-term parking is horizontal ground parking as required by DCMR 11 (C 805.9).
4. Long-term parking spaces meet the size requirements of DCRM 11 (C 805.10).
5. Stacked Bicycle parking indicated in diagram.
6. Short Term parking provided at grade.

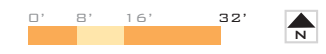


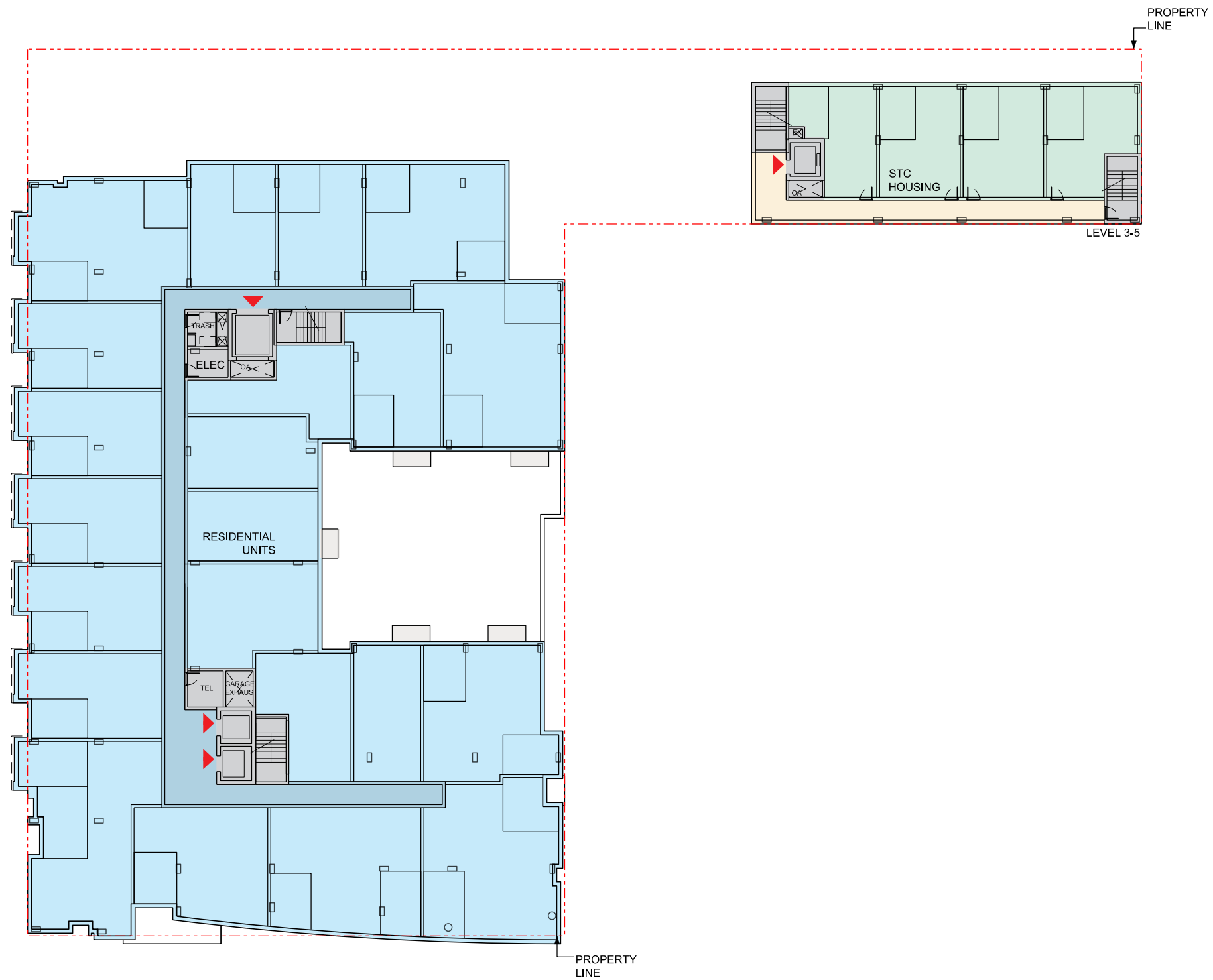
**NOTES:**

1. Interior partition locations, the number, size and locations of units, stairs and elevators are preliminary and shown for illustrative purposes only. Final layouts may vary.
2. Refer to Sheet 4.1 for landscape plan.
3. Refer to Sheet 3.10 for overall building dimensions.

**KEY**

<span style="display:inline-block; width:15px; height:10px; background-color:#ADD8E6; border:1px solid black;"></span>	RESIDENTIAL (MARKET)
<span style="display:inline-block; width:15px; height:10px; background-color:#4682B4; border:1px solid black;"></span>	RESIDENTIAL CIRCULATION / COMMON
<span style="display:inline-block; width:15px; height:10px; background-color:#FF8C00; border:1px solid black;"></span>	STC ARTS, DESIGN, & CREATION
<span style="display:inline-block; width:15px; height:10px; background-color:#FFD700; border:1px solid black;"></span>	STC NON-PROFIT OFFICE
<span style="display:inline-block; width:15px; height:10px; background-color:#90EE90; border:1px solid black;"></span>	STC HOUSING
<span style="display:inline-block; width:15px; height:10px; background-color:#F5DEB3; border:1px solid black;"></span>	STC CIRCULATION
<span style="display:inline-block; width:15px; height:10px; background-color:#D3D3D3; border:1px solid black;"></span>	PARKING
<span style="display:inline-block; width:15px; height:10px; background-color:#808080; border:1px solid black;"></span>	BUILDING SERVICES



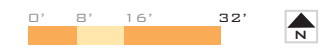


**NOTES:**

1. Interior partition locations, the number, size and locations of units, stairs and elevators are preliminary and shown for illustrative purposes only. Final layouts may vary.
2. Refer to Sheet 4.1 for landscape plan.
3. Refer to Sheet 3.10 for overall building dimensions.

**KEY**

<span style="display:inline-block; width:15px; height:10px; background-color:lightblue; border:1px solid black;"></span>	RESIDENTIAL (MARKET)
<span style="display:inline-block; width:15px; height:10px; background-color:teal; border:1px solid black;"></span>	RESIDENTIAL CIRCULATION / COMMON
<span style="display:inline-block; width:15px; height:10px; background-color:orange; border:1px solid black;"></span>	STC ARTS, DESIGN, & CREATION
<span style="display:inline-block; width:15px; height:10px; background-color:yellow; border:1px solid black;"></span>	STC NON-PROFIT OFFICE
<span style="display:inline-block; width:15px; height:10px; background-color:lightgreen; border:1px solid black;"></span>	STC HOUSING
<span style="display:inline-block; width:15px; height:10px; background-color:lightyellow; border:1px solid black;"></span>	STC CIRCULATION
<span style="display:inline-block; width:15px; height:10px; background-color:lightgrey; border:1px solid black;"></span>	PARKING
<span style="display:inline-block; width:15px; height:10px; background-color:grey; border:1px solid black;"></span>	BUILDING SERVICES





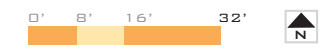


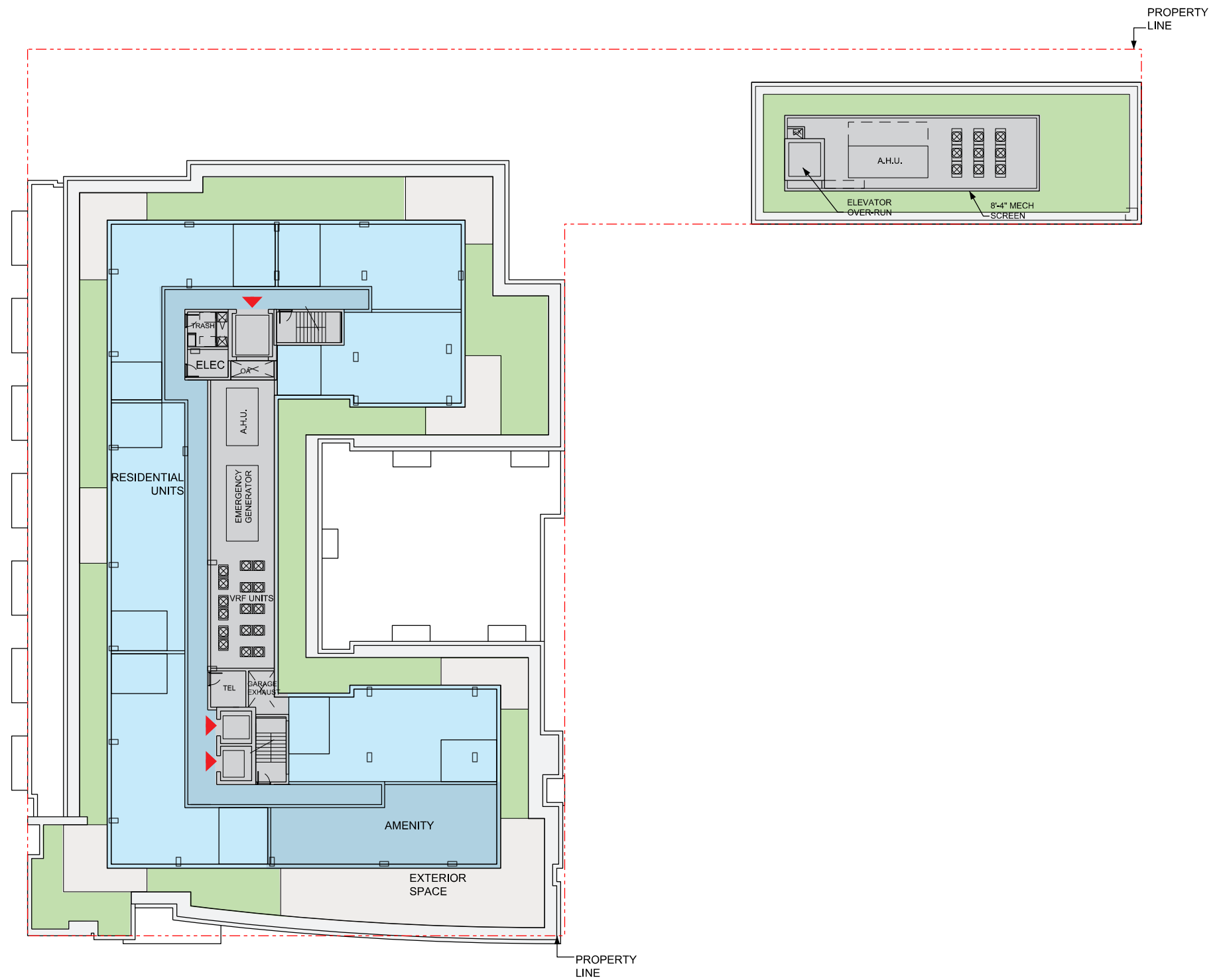
**NOTES:**

1. Interior partition locations, the number, size and locations of units, stairs and elevators are preliminary and shown for illustrative purposes only. Final layouts may vary.
2. Refer to Sheet 4.1 for landscape plan.
3. Refer to Sheet 3.10 for overall building dimensions.

**KEY**

<span style="display:inline-block; width:15px; height:10px; background-color:#ADD8E6; border:1px solid black;"></span>	RESIDENTIAL (MARKET)
<span style="display:inline-block; width:15px; height:10px; background-color:#4682B4; border:1px solid black;"></span>	RESIDENTIAL CIRCULATION / COMMON
<span style="display:inline-block; width:15px; height:10px; background-color:#FF8C00; border:1px solid black;"></span>	STC ARTS, DESIGN, & CREATION
<span style="display:inline-block; width:15px; height:10px; background-color:#FFD700; border:1px solid black;"></span>	STC NON-PROFIT OFFICE
<span style="display:inline-block; width:15px; height:10px; background-color:#90EE90; border:1px solid black;"></span>	STC HOUSING
<span style="display:inline-block; width:15px; height:10px; background-color:#FFDAB9; border:1px solid black;"></span>	STC CIRCULATION
<span style="display:inline-block; width:15px; height:10px; background-color:#D3D3D3; border:1px solid black;"></span>	PARKING
<span style="display:inline-block; width:15px; height:10px; background-color:#808080; border:1px solid black;"></span>	BUILDING SERVICES





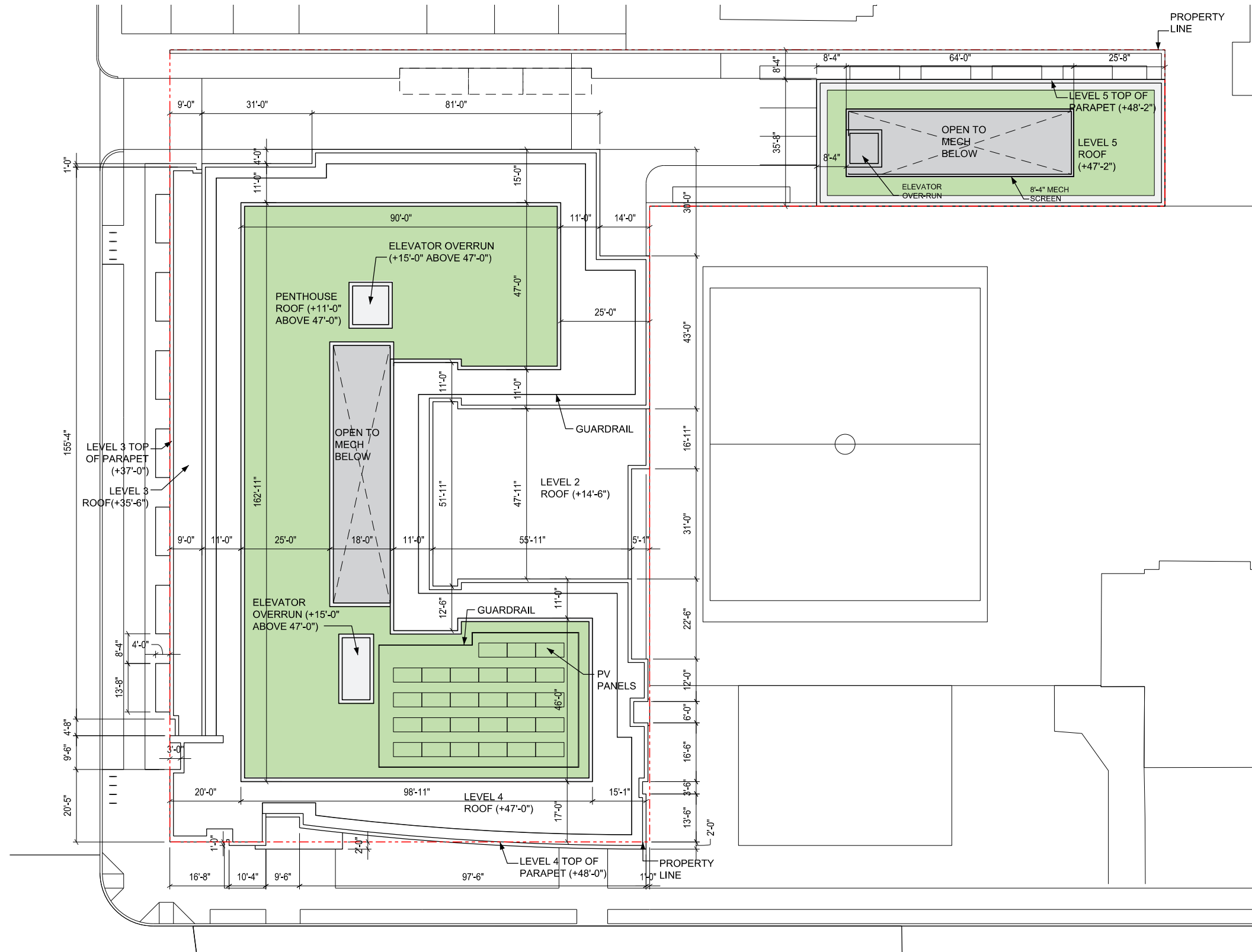
**NOTES:**

1. Interior partition locations, the number, size and locations of units, stairs and elevators are preliminary and shown for illustrative purposes only. Final layouts may vary.
2. Refer to Sheet 4.1 for landscape plan.
3. Refer to Sheet 3.10 for overall building dimensions.

**KEY**

<span style="display:inline-block; width:15px; height:10px; background-color:#ADD8E6; border:1px solid black;"></span>	RESIDENTIAL (MARKET)
<span style="display:inline-block; width:15px; height:10px; background-color:#4682B4; border:1px solid black;"></span>	RESIDENTIAL CIRCULATION / COMMON
<span style="display:inline-block; width:15px; height:10px; background-color:#FF8C00; border:1px solid black;"></span>	STC ARTS, DESIGN, & CREATION
<span style="display:inline-block; width:15px; height:10px; background-color:#FFD700; border:1px solid black;"></span>	STC NON-PROFIT OFFICE
<span style="display:inline-block; width:15px; height:10px; background-color:#90EE90; border:1px solid black;"></span>	STC HOUSING
<span style="display:inline-block; width:15px; height:10px; background-color:#F5DEB3; border:1px solid black;"></span>	STC CIRCULATION
<span style="display:inline-block; width:15px; height:10px; background-color:#D3D3D3; border:1px solid black;"></span>	PARKING
<span style="display:inline-block; width:15px; height:10px; background-color:#808080; border:1px solid black;"></span>	BUILDING SERVICES





**NOTES:**

1. Interior partition locations, the number, size and locations of units, stairs and elevators are preliminary and shown for illustrative purposes only. Final layouts may vary.
2. Refer to Sheet 4.1 for landscape plan.
3. Flexibility is requested to make refinements to parking and loading configurations, including layout, so long as the required parking and loading complies with the size, location, access, maintenance and operation requirements of DCMR 11.
4. Building heights are taken from the measuring point on 6th Street at the elevation of +23.00' above sea level. For purposes of the project building height it will act as relative zero. Refer to sheet 3.3 for measuring point location.

**KEY**

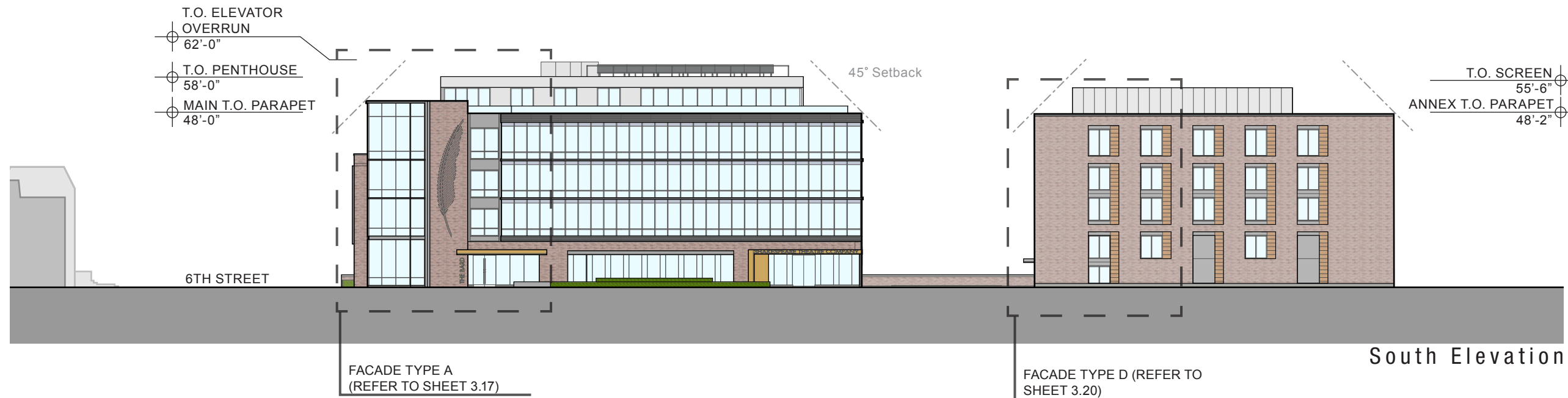
<span style="display:inline-block; width:15px; height:10px; background-color:#ADD8E6; border:1px solid black;"></span>	RESIDENTIAL (MARKET)
<span style="display:inline-block; width:15px; height:10px; background-color:#4682B4; border:1px solid black;"></span>	RESIDENTIAL CIRCULATION / COMMON
<span style="display:inline-block; width:15px; height:10px; background-color:#FF8C00; border:1px solid black;"></span>	STC ARTS, DESIGN, & CREATION
<span style="display:inline-block; width:15px; height:10px; background-color:#FFD700; border:1px solid black;"></span>	STC NON-PROFIT OFFICE
<span style="display:inline-block; width:15px; height:10px; background-color:#90EE90; border:1px solid black;"></span>	STC HOUSING
<span style="display:inline-block; width:15px; height:10px; background-color:#FFDAB9; border:1px solid black;"></span>	STC CIRCULATION
<span style="display:inline-block; width:15px; height:10px; background-color:#D3D3D3; border:1px solid black;"></span>	PARKING
<span style="display:inline-block; width:15px; height:10px; background-color:#808080; border:1px solid black;"></span>	BUILDING SERVICES



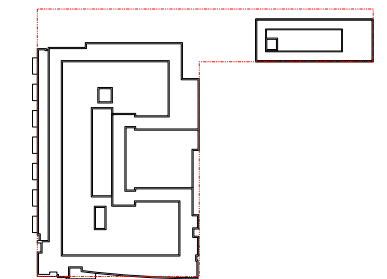








- NOTES:
1. Building heights are taken from the measuring point on 6th Street at the elevation of +23.00' above sea level. For purposes of the project building height it will act as relative zero. Refer to sheet 3.3 for measuring point location.
  2. Flexibility is requested to vary the final color selection of exterior materials within the ranges proposed, based on availability at the time of construction without reducing the quality of materials.
  3. Flexibility is requested to make minor refinements to exterior details and dimensions, including belt courses, sills, bases, cornices, railings and trim, or any other changes to comply with the building codes or that are otherwise necessary to obtain a final building permit.
  4. For material images refer to page 3.16







Main Building West Elevation



Main Building East Elevation

- NOTES:
1. Building heights are taken from the measuring point on 6th Street at the elevation of +23.00' above sea level. For purposes of the project building height it will act as relative zero. Refer to sheet 3.3 for measuring point location.
  2. Flexibility is requested to vary the final color selection of exterior materials within the ranges proposed, based on availability at the time of construction without reducing the quality of materials.
  3. Flexibility is requested to make minor refinements to exterior details and dimensions, including belt courses, sills, bases, cornices, railings and trim, or any other changes to comply with the building codes or that are otherwise necessary to obtain a final building permit.
  4. For material images refer to page 3.16

